

Subject: The Tower of London – A Tumultuous History

1. Think of a synonym for the following words/phrases

to erect (e.g. a building) –

to decline –

to break free –

to provide –

endeavour –

2. Define the following words in English

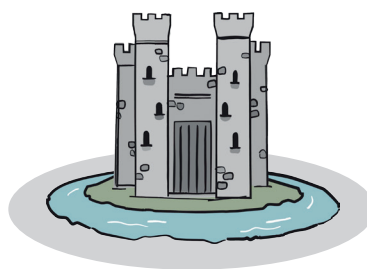
moat –

menagerie –

sight –

moniker –

fireplace –



3. What are the missing prefixes/suffixes? Find the words in the text.

.....famous

formid.....

opul.....

vener.....

apparent.....

4. Match the halves

crown	place
virtually	display
to take	to the throne
on	jewels
to ascend	impossible

5. Answer the questions

Why is the moniker 'tower' a little bit confusing?

Who built the Tower of London, and when?

When did the importance of the Tower decline?

What happened to the Tower during the Second World War?

How many people were executed in the Tower of London between 1066 and 1914?

6. Write your own sentences with the following words/phrases from the text

.....

interestingly enough

.....

in spite of

.....

apparently

.....

during

.....

as a result of

7. What are the missing letters?

..... impenetr.....lity

..... espi.....ge

..... fortres....

..... m....ieval

..... lux....ious